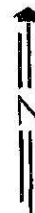
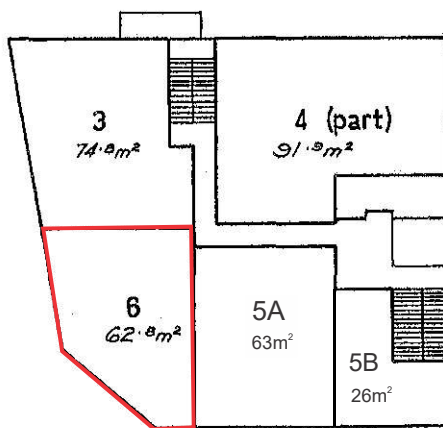


BUILDING UNITS PLAN No. **1072**

LEVEL C



Units 3, 4 (part), 5 & 6
Commercial purposes only.

Scale 1:250 (Metric)

Floor Areas are approximate only.

TOSTEE CONSTRUCTION COY. PTY. LTD.
by its duly constituted Attorney
JOHN WILLIAM McDONALD in the
presence of:

John William McDonald

TOSTEE CONSTRUCTION COY. PTY. LTD.
by its duly constituted Attorney

..... *John M. Donald*

SIGNATURE OF REGISTERED PROPRIETOR.

Alan Galloway
SECRETARY/TOWN CLERK.

GOLD COAST CITY COUNCIL.