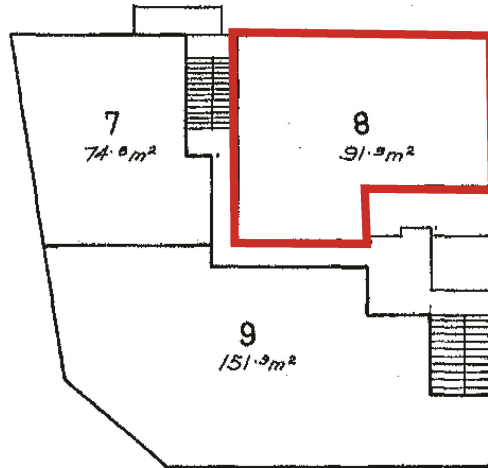


BUILDING UNITS PLAN No. 1072

LEVEL D



Units 7, 8, & 9
Commercial purposes only

Scale 1:250 (Metric)

Floor Areas are approximate only.

TOSTEE CONSTRUCTION COY. PTY. LTD.
by its duly constituted Attorney
JOHN WILLIAM McDONALD in the
presence of:

DL Campbell Solicitor

TOSTEE CONSTRUCTION COY. PTY. LTD.
by its duly constituted Attorney

John W. Donald

SIGNATURE OF REGISTERED PROPRIETOR.

Alan G. ...
REGISTERED TOWN CLERK.

GOLD COAST CITY COUNCIL.